

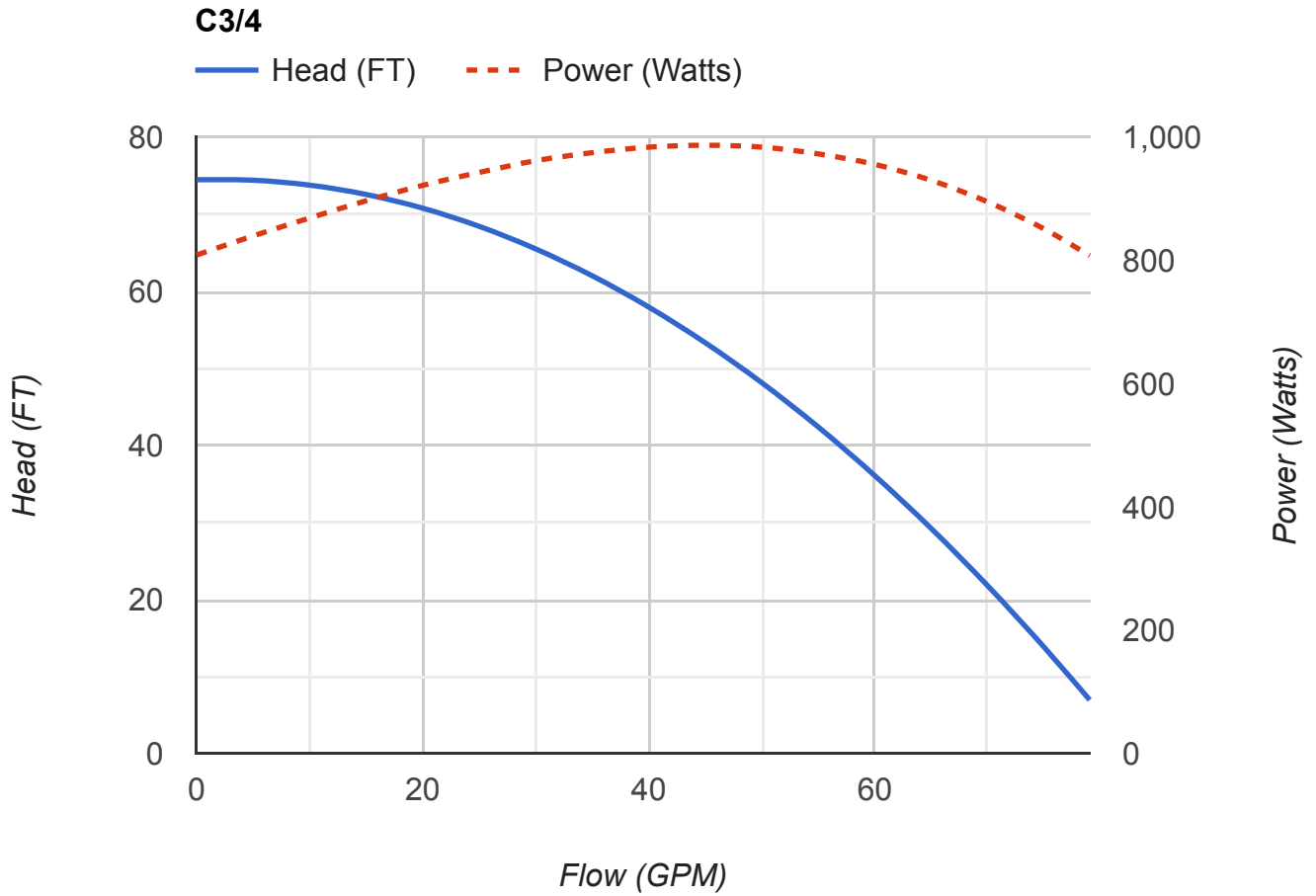
PerformancePro Pumps Engineering Data Packet

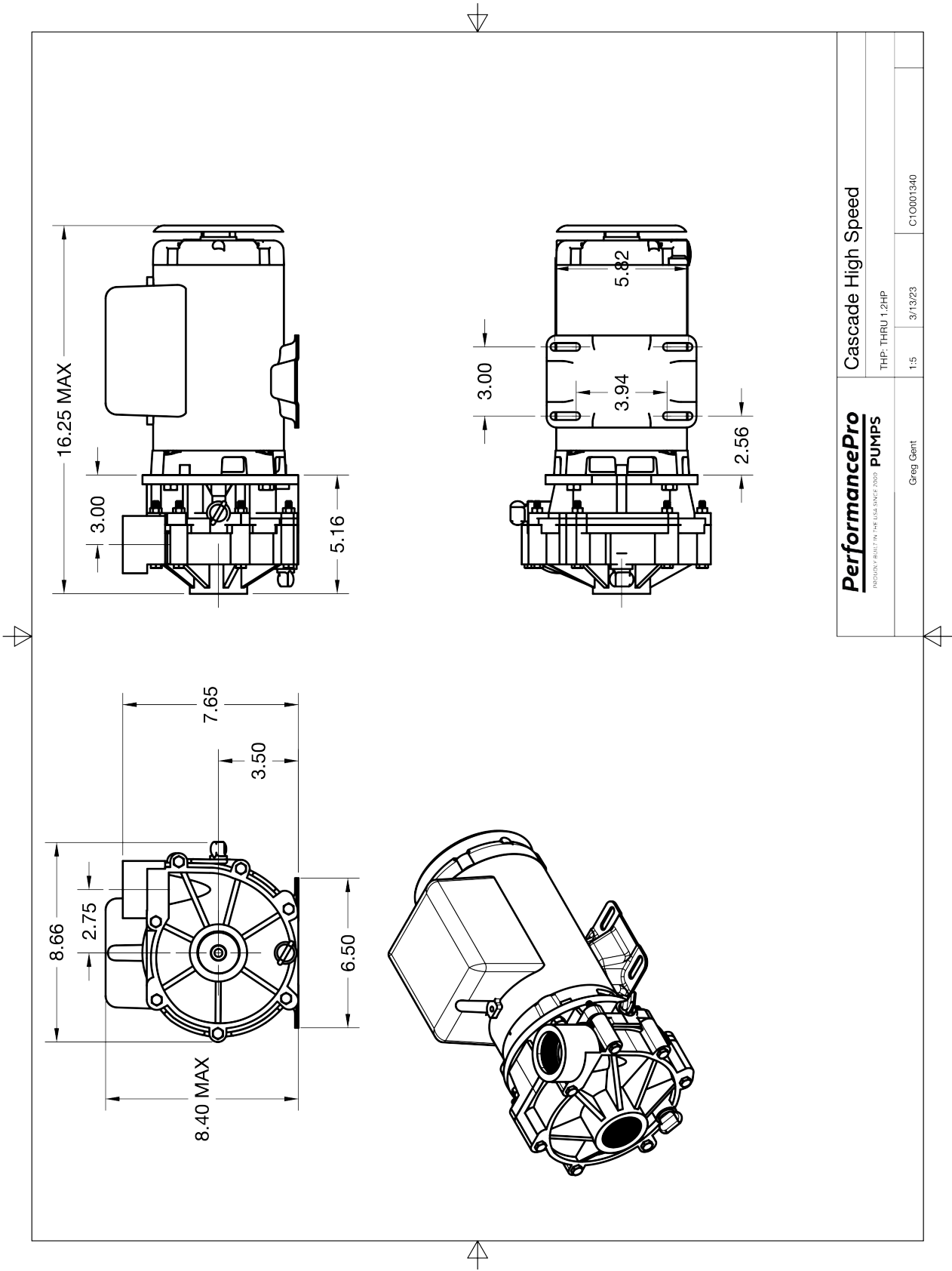
Pump:

Series: Cascade High Speed
Pump Model: C3/4
Design: Flooded Suction
Inlet: 1.5 inch
outlet: 1.5 inch
Impeller: CN3/4
Trim: 4.80
Fluid: Water

Motor:

Motor Number: CPM-123
Manufacturer: Baldor
Rated HP: 0.75
Total HP: 1.13
Speed: 3450
Enclosure: ODP
Frame: 56J (Jet Pump)
Volts: 115/230
Phase: 1
Frequency: 60
Amps At Total HP: 9/4.5





PerformancePro
PERFORMANCE PUMPS, THE USA MADE PUMP
PUMPS

Cascade High Speed

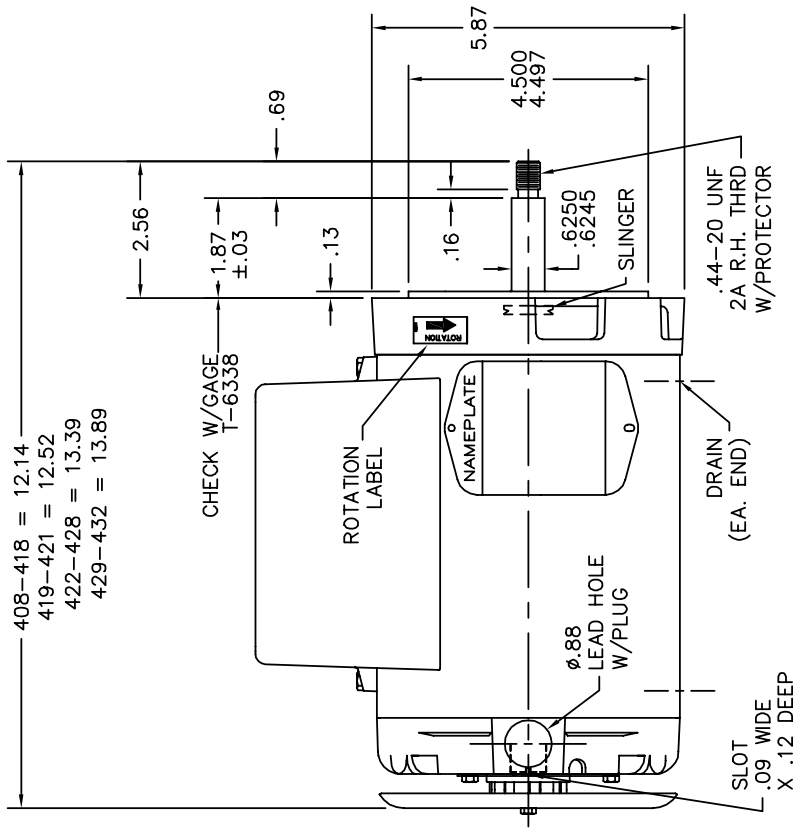
THP: THRU 1.2HP

Greg Gent

1:5 3/13/23

C10001340

34LYF793



NOTE: MACHINE CUT THREADS ONLY PER CUSTOMER REQUIREMENT

34LYF793

CUSTOMER IS RESPONSIBLE FOR DETERMINING THAT BALDOR'S PRODUCT WILL PERFORM SUITABLY IN THE INTENDED APPLICATION.

REV. LTR: A

VERSION: 01

FILE: \AAA\00195\563

REVISED: 07:49:09 02/24/2017 BY: ENFROSTO?



MTL: -

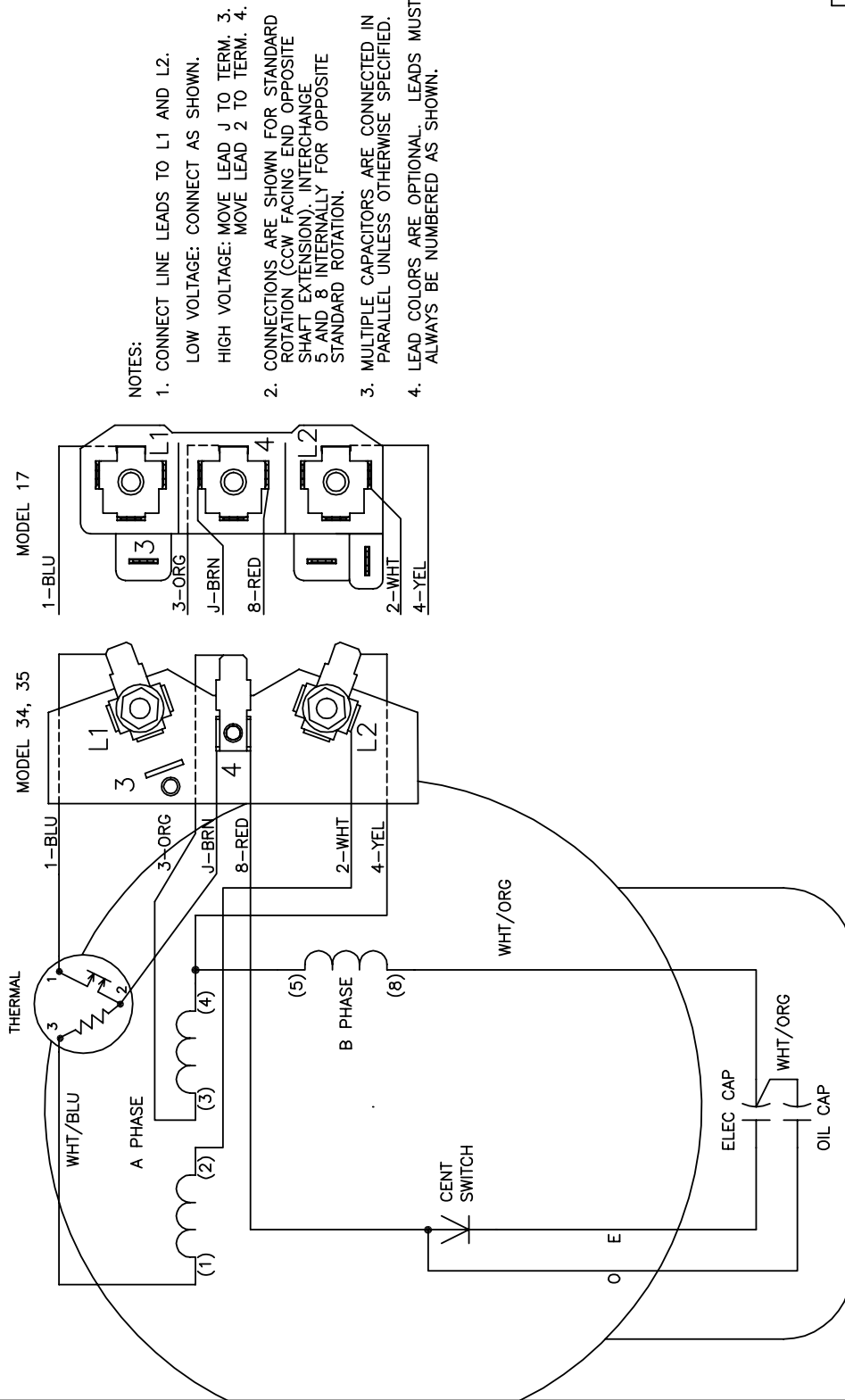
BALDOR

VER 34LC NEMA 56J OPEN, TERM PANEL, DRIP COVER

SH 1 of 1

CD0769

CD0769



NOTES:

1. CONNECT LINE LEADS TO L1 AND L2.
LOW VOLTAGE: CONNECT AS SHOWN.
HIGH VOLTAGE: MOVE LEAD J TO TERM. 3.
MOVE LEAD 2 TO TERM. 4.
2. CONNECTIONS ARE SHOWN FOR STANDARD ROTATION (CCW FACING END OPPOSITE SHAFT EXTENSION). INTERCHANGE 5 AND 8 INTERNALLY FOR OPPOSITE STANDARD ROTATION.
3. MULTIPLE CAPACITORS ARE CONNECTED IN PARALLEL UNLESS OTHERWISE SPECIFIED.
4. LEAD COLORS ARE OPTIONAL. LEADS MUST ALWAYS BE NUMBERED AS SHOWN.

REV. DESC: REMOVE OPTIONAL THERMAL CONNECTION		BALDOR ELECTRIC Co.	
REV. LTR: E	VERSION: 01	TYPE LC, DV, FIX, THERMAL, B PH AMPS THRU HTR-HVC, TERM PLATE	
697000	FILE: \AAA\00007\260		
MTL: -	REVISD: 15:13:50 09/08/2005		
	TDR: 000000373051		
	BY: ENJOEPO		